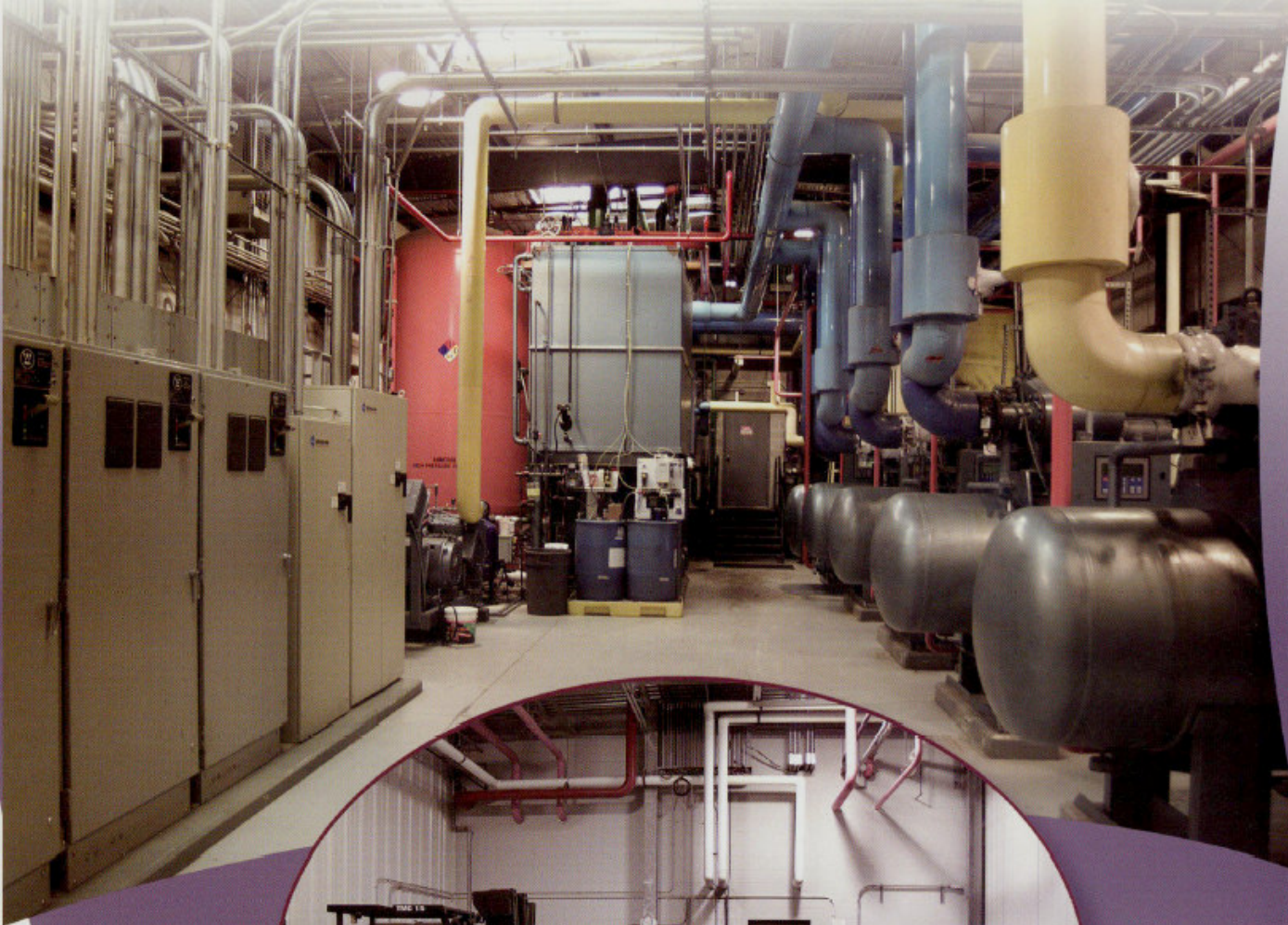


Cold Storage



AWB Engineers has extensive experience in the design of buildings used for frozen product storage. Before high quality frozen products can be found in local grocery store freezers, they must first be processed, packaged and quickly frozen to preserve their freshness. Once frozen they are held in a cold storage facility until they are sent to a grocery store or institution for sale and distribution. Design requirements for cold storage facilities are very severe. Walls and roofs must be insulated to maintain the temperature and braced to withstand the vertical and lateral loads imposed. Floors must also be insulated and the under slab material warmed to prevent frost heaving. Truck receiving and delivery doors must be designed and detailed for durability and to isolate the cold storage spaces from the outside temperature. The safety management required for the mechanical refrigeration systems is formidable and requires sound engineering judgement and experience.





These buildings are characterized by the need to quickly freeze food or other products and to hold them frozen at a constant temperature. Cold storage centers, like food distribution centers, require the utmost in cleanliness and serviceability. All of the additional conditions that are required for food distribution centers apply equally to the needs of a cold storage center. In addition to the severe serviceability of handling large pallet loads of product, the building enclosure surrounding the stored product must resist the temperature gradient from the ambient outside temperature and the frozen temperature for the products stored.

A major consideration with the initial design is the likely possibility of enlargement or upgrade of the equipment during the life of the facility. The staff of AWB Engineers seeks to explore the possible next step in the ultimate use of the facility to avoid being limited by lack of proper planning. We recognize that the definition for a good project is one in that the specified scope is completed within the agreed upon budgetary and schedule constraints. We pride ourselves on meeting these objectives.

